

VM 9



VERTICAL TURNING CENTER

think

VERTICAL

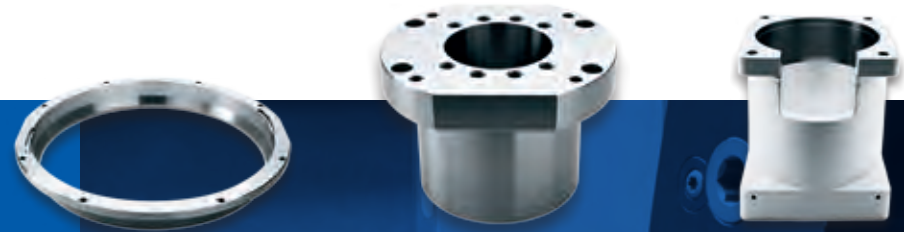


# PRECISE

## Optimally Adapted Vertical Machining

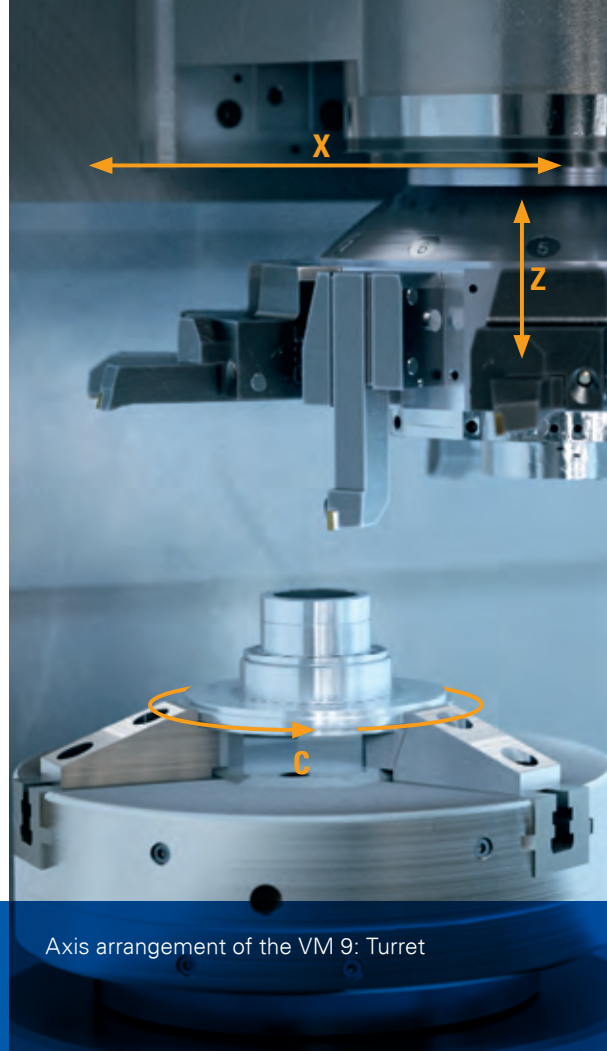
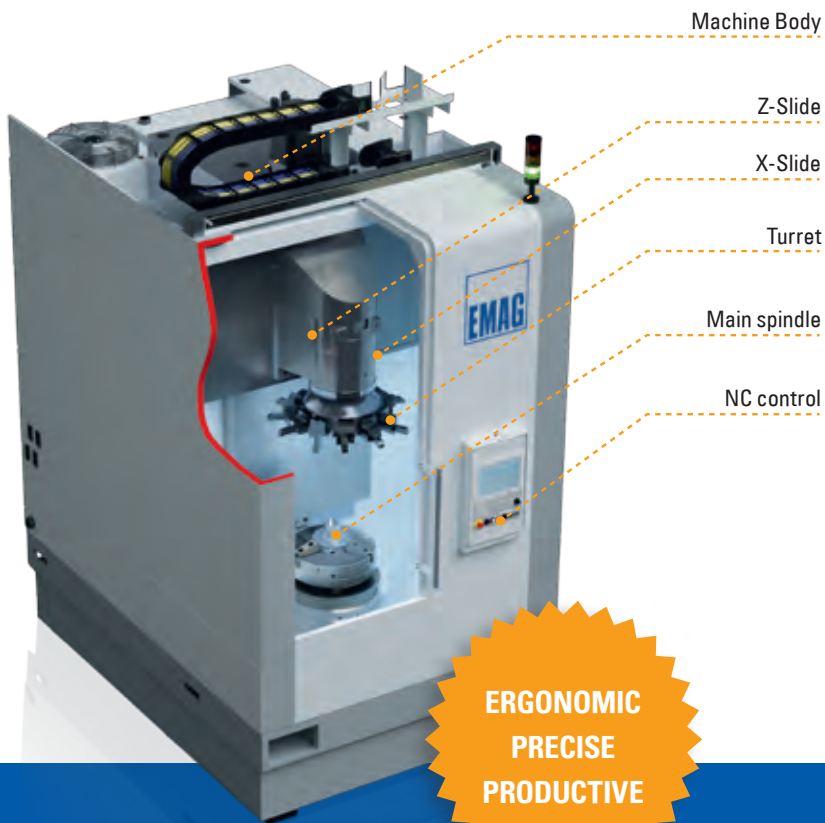
The VM 9 vertical turning center is designed for the manufacture of individual parts and small production runs with a wide variety of parts. Depending on the desired interface (BMT or VDI), the tool turret features eight or twelve tool positions, which can also be equipped with driven tools to carry out drilling operations, for example. The integrated probe ensures process reliability and guarantees consistently high workpiece quality (first part = OK part).

The VM 9 is thus extremely well equipped for a wide variety of production tasks.



VM 9 – VERTICAL  
TURNING CENTER





Axis arrangement of the VM 9: Turret

## TECHNICAL DATA

	VM 9
Chuck diameter	450 mm 17.5 inch
Weight, max.	300 kg 661 lb
Swing diameter over base	650 mm 25.5 inch
Turning diameter, max.	450 mm 17.5 inch
X-axis / Z-axis travel	330 / 500 mm 13 / 19.5 inch
Spindle height (without clamping devices)	970 mm 38 inch
Main spindle	
» Spindle flange to ISO 702-1: 2009	Size 8
» Spindle bearing	140 / 160 mm 5.5 / 6 inch
Main drive unit	
» Synchronous motor (40% duty cycle)	49 / 83 kW 66 / 111 hp
» Synchronous motor (100% duty cycle)	32 / 54 kW 43 / 72 hp
» Full performance from spindle speed	800 rpm
» Torque (40% duty cycle)	585 / 990 Nm 431 / 730 ft-lb
» Torque (100% duty cycle)	380 / 650 Nm 280 / 479 ft-lb
» Number of revolutions, max.	3,000 / 2,400 rpm
» Accuracy of spindle positioning	± 0.01 ° (C-axis)
Feed drive	
» Rapid-traverse rate X / Z	30 / 30 m/min 1,181 / 1,181 ipm
» Feed pressure X / Z	4 / 8 kN 899 / 1,798 lbf
» Ball screw dia. X / Z	40 / 40 mm 1.5 / 1.5 inch
Disk-type turret	
» for cylindrical shanks to DIN 69880	VDI 40 / BMT 65
» Turret tool positions	8 / 12
» Width across flats	360 / 380 mm 15 / 15 inch
» Cutting circle	690 mm 27 inch
» Torque of driven tools, 40% / 100%	24 / 15 Nm 20 / 11 ft-lb
» Number of revolutions of driven tools	6,000 rpm

## FEATURES

### MAXIMUM PRODUCTIVITY

Highly dynamic axes for short idle times and quick machining processes

### SIMPLE HANDLING

All the service units are easy to reach

### MAXIMUM PERFORMANCE

Short workpiece transport distances

### HIGH SURFACE ACCURACY

Axis monitoring by rotary, indirect absolute encoders. All axes with an optional, fully encapsulated linear glass scale

### IDEAL FOR HEAVY-DUTY MACHINING

Generously dimensioned main spindle, maintenance-free spindle motors and rigid guideways

### VERY HIGH WORKPIECE SERVICE LIVES

Machine body made of MINERALIT<sup>®</sup>, 6 to 8 times better damping properties than gray cast iron

At home all over the world.

**EMAG Salach GmbH**

**Salach**

Austrasse 24  
73084 Salach  
Germany  
Phone: +49 7162 17-0  
Fax: +49 7162 17-820  
E-mail: info@salach.emag.com

**Frankfurt**

Martin-Behaim-Strasse 12  
63263 Neu-Isenburg  
Germany  
Phone: +49 6102 88245-0  
Fax: +49 6102 88245-412  
E-mail: info@frankfurt.emag.com

**Leipzig**

Pittlerstrasse 26  
04159 Leipzig  
Germany  
Phone: +49 341 4666-0  
Fax: +49 341 4666-114  
E-mail: info@leipzig.emag.com

**Munich**

Zamdorferstrasse 100  
81677 München  
Germany  
Phone: +49 89 99886-250  
Fax: +49 89 99886-160  
E-mail: info@muenchen.emag.com

**Austria**

Glaneckerweg 1  
5400 Hallein  
Austria  
Phone: +43 6245 76023-0  
Fax: +43 6245 76023-20  
E-mail: info@austria.emag.com

**Denmark**

Horsvangen 31  
7120 Vejle Ø  
Denmark  
Phone: +45 75 854854  
Fax: +45 75 816276  
E-mail: info@daenemark.emag.com

**Sweden**

Glasgatan 19B  
73130 Köping  
Sweden  
Phone: +46 221 40305  
E-mail: info@sweden.emag.com

**Hungary**

Gerenda 10  
1163 Budapest  
Hungary  
Phone: +36 30 9362-416  
E-mail: lbujaki@emag.com

**Poland**

ul. Prusa 9F / 1  
50-319 Wrocław  
Poland  
Phone: +48 728 389 989  
Fax: +48 601 371 353  
E-mail: arak@emag.com

**Czech Republic**

Lolkova 766  
103 00 Praha – Kolovraty  
Czech Republic  
Phone: +420 731 476070  
E-mail: mdelis@emag.com



Contact us. Now.

**Market Companies**

**NODIER EMAG INDUSTRIE**

2, Parc des Fontenelles  
78870 Bailly  
France  
Phone: +33 130 8047-70  
Fax: +33 130 8047-69  
E-mail: info@nodier.emag.com

**EMAG MAQUINAS HERRAMIENTA S.L.**

Pasaje Arrahona, n° 18  
Polígono Industrial Santiga  
08210 Barberà del Vallès (Barcelona)  
Spain  
Phone: +34 93 7195080  
Fax: +34 93 7297107  
E-mail: info@emh.emag.com

**ZETA EMAG Srl**

Viale Longarone 41/A  
20080 Zibido S. Giacomo (MI)  
Italy  
Phone: +39 02 905942-1  
Fax: +39 02 905942-21  
E-mail: zetaemag@emag.com

**EMAG UK Ltd.**

Chestnut House,  
Kingswood Business Park  
Holyhead Road  
Albrighton  
Wolverhampton WV7 3AU  
Great Britain  
Phone: +44 1902 37609-0  
Fax: +44 1902 37609-1  
E-mail: info@uk.emag.com

**EMAG OOO**

ul. Akademika Chelomeya 3/2  
117630 Moscow  
Russia  
Phone: +7 495 287 0960  
Fax: +7 495 287 0962  
E-mail: info@russia.emag.com

**EMAG L.L.C. USA**

38800 Grand River Avenue  
Farmington Hills, MI 48335  
USA  
Phone: +1 248 477-7440  
Fax: +1 248 477-7784  
E-mail: info@usa.emag.com

**EMAG MEXICO**

Colina de la Umbria 10  
53140 Boulevares  
Naucaipan Edo. de México  
Mexico  
Phone: +52 55 5374266-5  
Fax: +52 55 5374266-4  
E-mail: info@mexico.emag.com

**EMAG DO BRASIL Ltda.**

Rua Schilling, 413  
Vila Leopoldina  
05302-001 São Paulo  
SP, Brazil  
Phone: +55 11 38370145  
Fax: +55 11 38370145  
E-mail: info@brasil.emag.com

**EMAG INDIA Pvt. Ltd.**

Technology Centre  
No. 17/G/46-3, Industrial Suburb,  
2<sup>nd</sup> Stage, Yeshwantpur,  
Bengaluru – 560 022.  
India  
Phone: +91 80 42544400  
Fax: +91 80 42544440  
E-mail: info@india.emag.com

**EMAG GROUP Thailand Office**

1/15 7F Room B3, Bangna Thani Tower  
Bangna Trad KM 3, Bangna  
Bangkok 10260  
Thailand  
Phone: +66 87 1468800  
E-mail: ukaiser@emag.com

**EMAG Machine Tools (Taicang) Co., Ltd.**

Building 3, Cang Neng  
Europe & American Technology Park  
No. 8 Lou Jiang Rd. (N.)  
215400 Taicang  
Jiangsu, China  
Phone: +86 512 5357-4098  
Fax: +86 512 5357-5399  
E-mail: info@emag-china.com

**EMAG KOREA Ltd.**

Rm204, Biz center, SKN Technopark, 124  
Sagimakgol-ro, Sangdaewon-dong,  
Jungwon-gu, Seongnam City,  
Gyeonggi-do, 462-721  
South Korea  
Phone: +82 31 776-4415  
Fax: +82 31 776-4419  
E-mail: info@korea.emag.com

**TAKAMAZ EMAG Ltd.**

1-8 Asahigaoka Hakusan-City  
Ishikawa Japan, 924-0004  
Japan  
Phone: +81 76 274-1409  
Fax: +81 76 274-8530  
E-mail: info@takamaz.emag.com

Subject to technical changes.

272-1-GB/03.2015 - Printed in Germany - © Copyright EMAG

www.emag.com

