

PROMOTION

Valid from May 1 – August 31, 2021

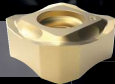
ADVANCES 2021

ONLY FOR A LIMITED TIME

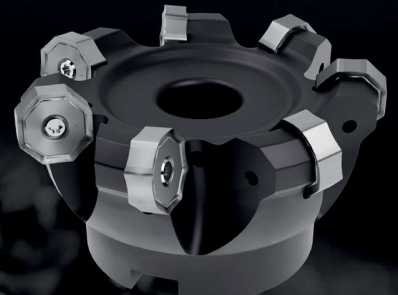
TRY THE LATEST INNOVATION AT
THE LOWEST PRICE



M8065HD



M1200 Max Screw
Clamping



M1600



**BUY 10 INSERTS PER POCKET (MIN 40 INSERTS)
AND GET THE STEEL BODY FREE OF CHARGE***

M8065HD



Heavy
duty

Reliable

Use the M8065HD to easily confront heavy-duty milling jobs in steel and cast-iron materials by applying deep depths of cut while consistently maintaining high metal removal rates.

M8065HD provides reliable cost savings to any machinist, starting at the price tag, ending on the spindle



M8065HD

Shell Mills: 50-315mm

8-Edged Face Mill for Heavy-Duty Applications

- Universal SNMX15 -MM geometry insert in grades WP35CM, WU20PM, WK15CM.
- 64° approach angle of the cutter in combination with a 6.35mm thick insert.
- High DOC capability (9mm Ap1 max).
- Optimized chip gash design.

M1200 Max Screw Clamping



M1200 Max Screw Clamping is for customers who need to run at a higher DOC up to 7,5mm with a tool with the best cost-per-edge.



M1200 Max Screw Clamping

Shell Mills: 80-250mm

12-Edged Face Mill for Steel, Stainless Steel, Grey Cast Iron, and Nodular Iron

- Universal HNMU11 -MM geometry in grades WP35CM, WU20PM, WK15CM.
- Comprehensive offering: Cutters with 56° lead angle with a 7mm strong and thick insert.
- Pressed-and-sintered-to-size (PSTS) insert in 11mm IC.
- High DOC capability (7,5mm Ap1 max).

M1600



This face mill with a 16-edged insert provides smooth cutting action and low power consumption to steel, stainless steel, and cast iron medium roughing and semi-finishing jobs.



M1600

Shell Mills: 50-160mm

16-Edged Face Mill for Medium Roughing and Semi-Finishing of Steels, Stainless Steels, and Cast Iron.

- Universal -MM geometry in grades WP35CM, WU20PM, WK15CM.
- Comprehensive offering: Cutters with 44° lead angle.
- Precision ground insert.
- Maximum depth of cut: 4mm.
- Smart insert design engineered to resist shock loads, resulting in longer tool life.